

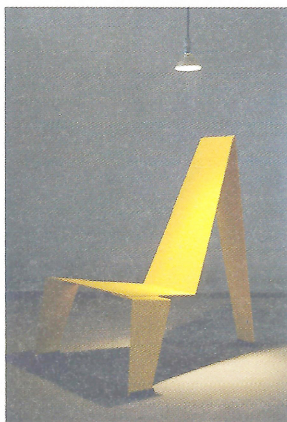
DESIGN & ARCHITECTURE

1937

Oscar Niemeyer's career began with Rio's Gustavo Capanema Palace, built between 1937 and 1945 to house Brazil's Ministry of Education and Culture while interning with architect Lúcio Costa.

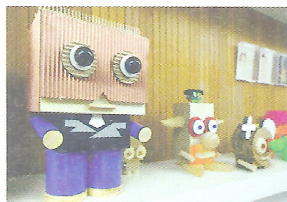
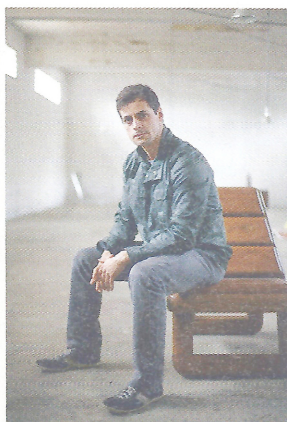
Top 3
Architect, retailer, designer

01 Studio Zanini (furniture): Rio-born Zanini de Zanine (*far right*) got his first insight into furniture design while watching the work of his father, the famous designer José Zanine Caldas. Today, besides creating his own furniture line in wood (*right*), the young Zanine works with a number of international brands including Poltrona Frau, Discipline and Cappellini, whose design director, Giulio Cappellini, invited him to collaborate with the influential Italian firm in 2011. studiozanini.com.br



02 Via Manzoni (design shop): Tired of trekking to São Paulo for a design fix, Gustavo Ribeiro decided to convert a mansion just off Ipanema's lagoon into the city's first concept store (*far right and middle, right*), which he opened seven years ago. His meticulous curation has gained a reputation for Via Manzoni the first point-of-call for homegrown furniture and interior design talent. **Rising stars such as Humberto da Mata often showcase new collections here alongside the more established names such as Tom Dixon and the Campana brothers.** viamanzoni.com.br

03 Felipe Rio Branco (architecture): Architect and interior designer Felipe Rio Branco (*above*) started his studio in 2007 and has since developed a portfolio ranging from residential properties to office and retail spaces. "Whether it's a house in São Conrado or a bar in Lagoa, a good partnership with our clients and with all the other professionals involved is something crucial to us," he says of his project management philosophy. — (M) feliperio Branco.com.br



Q & A



Washington Fajardo
President,
Rio World Heritage Institute

Tell us more about Rio World Heritage Institute.

It was launched last year, not only with the 2016 Olympics in mind but also because we needed to address architecture and urbanism in a more cultural aspect. It is a body dedicated to cultural heritage as a challenge.

How important is architecture to Rio?

Design is essential to Carioca culture. All cities need to be revisited to get legitimacy in faster times. Rio has always been tightly connected to the history of Brazilian architecture; it has a legacy and reputation to protect.

What are your most significant projects at the moment?

We are working on a large redevelopment project for the Olympics - we are offering 24 abandoned historical buildings across Rio to the Olympic nations. Instead of paying millions to rent a venue for their country's representatives during Rio 2016, they commit to the refurbishment of the building in question. — (M)



Sambódromo
The spirit of Rio

The famous strip that plays host every February to Rio's samba school parade runs along a 700m stretch of Rua Marquês de Sapucaí.

Designed in 1984 by Oscar Niemeyer, the Sambódromo's facelift last year was overseen by Niemeyer himself shortly before his death aged 104. New stands accommodate an extra 12,500 spectators, pushing capacity for the vast space to 85,000. — (M)

